

2013 NC Hippology Contest

Senior ID's

1

Identify the
uterine horn.

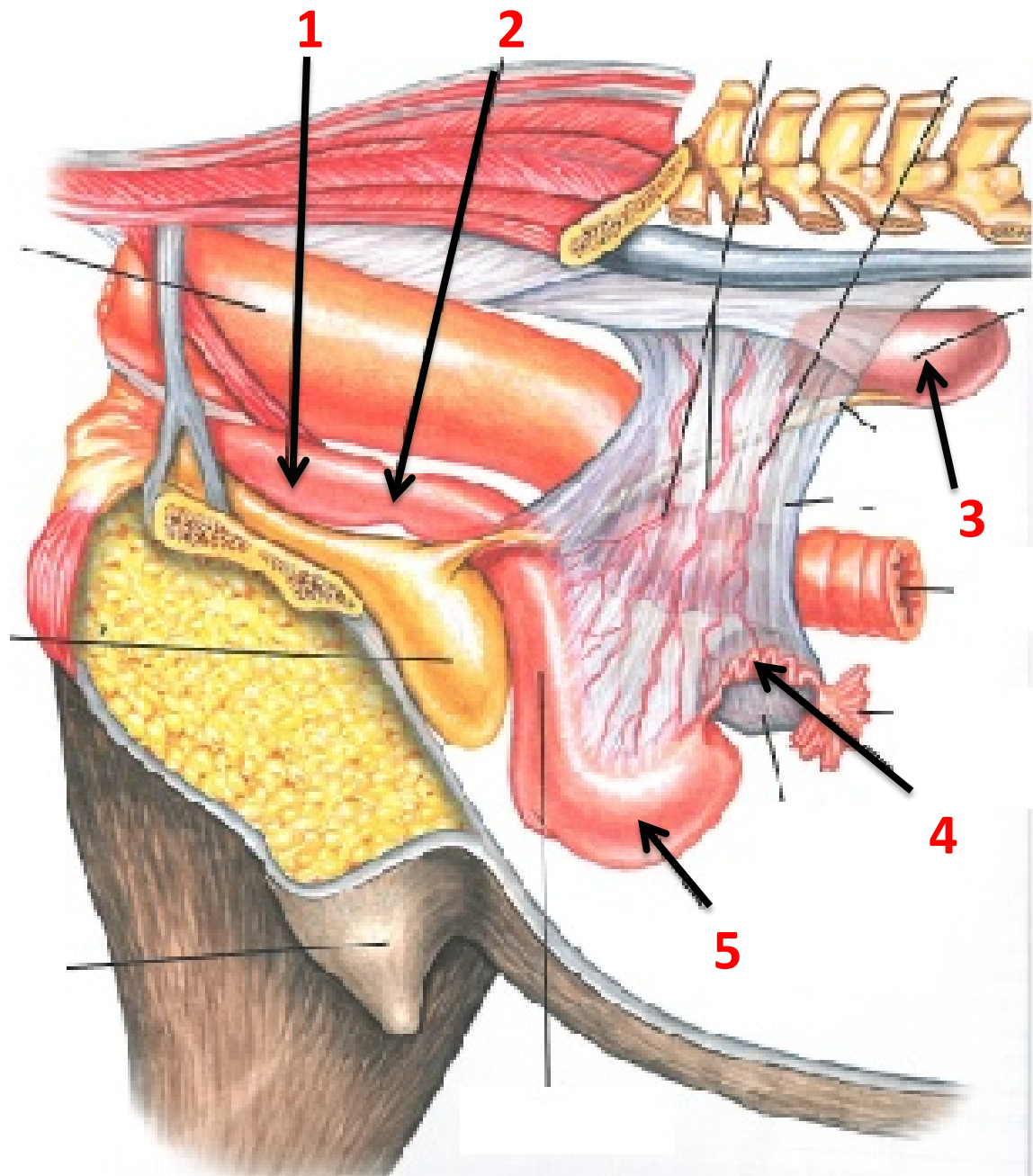
A-1

B-2

C-3

D-4

E-5



2

**Identify the
illustrated piece of
equipment.**

A- Ultrasound

B- MRI

C- X-Ray

D- PET Scan

E- CAT Scan



3

Identify the following equipment.

A-Extractor

B-Elevator

C-Mouth Speculum

D-Float

E-Canine Cutter



4

Identify the hypothalamus.

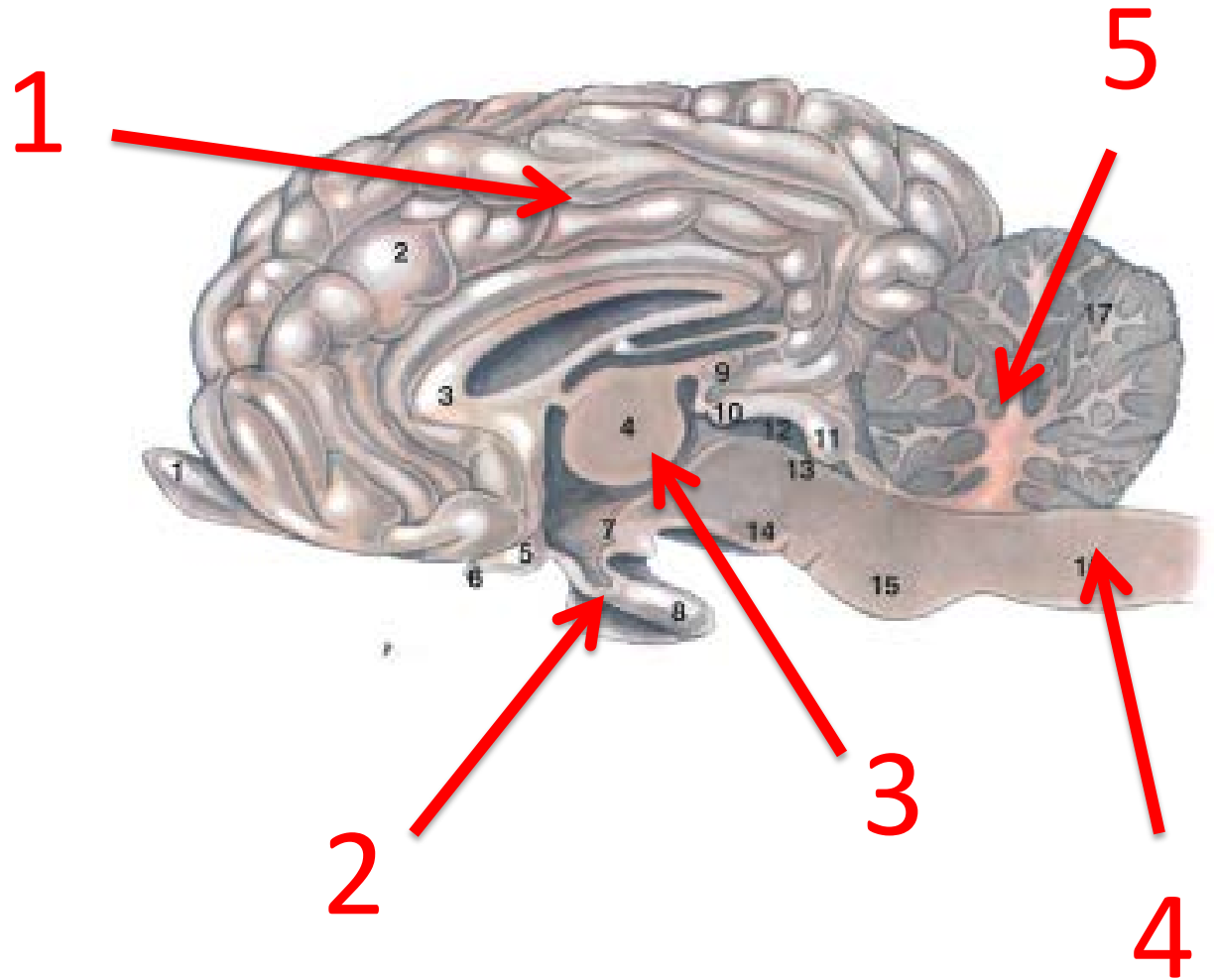
A- 1

B- 2

C- 3

D- 4

E- 5



5

Identify this grass hay.

A-Orchard Grass

B-Lespedeza

C-Bermuda Grass

D-Alfalfa

E-Timothy



6

Identify the indicated structure.

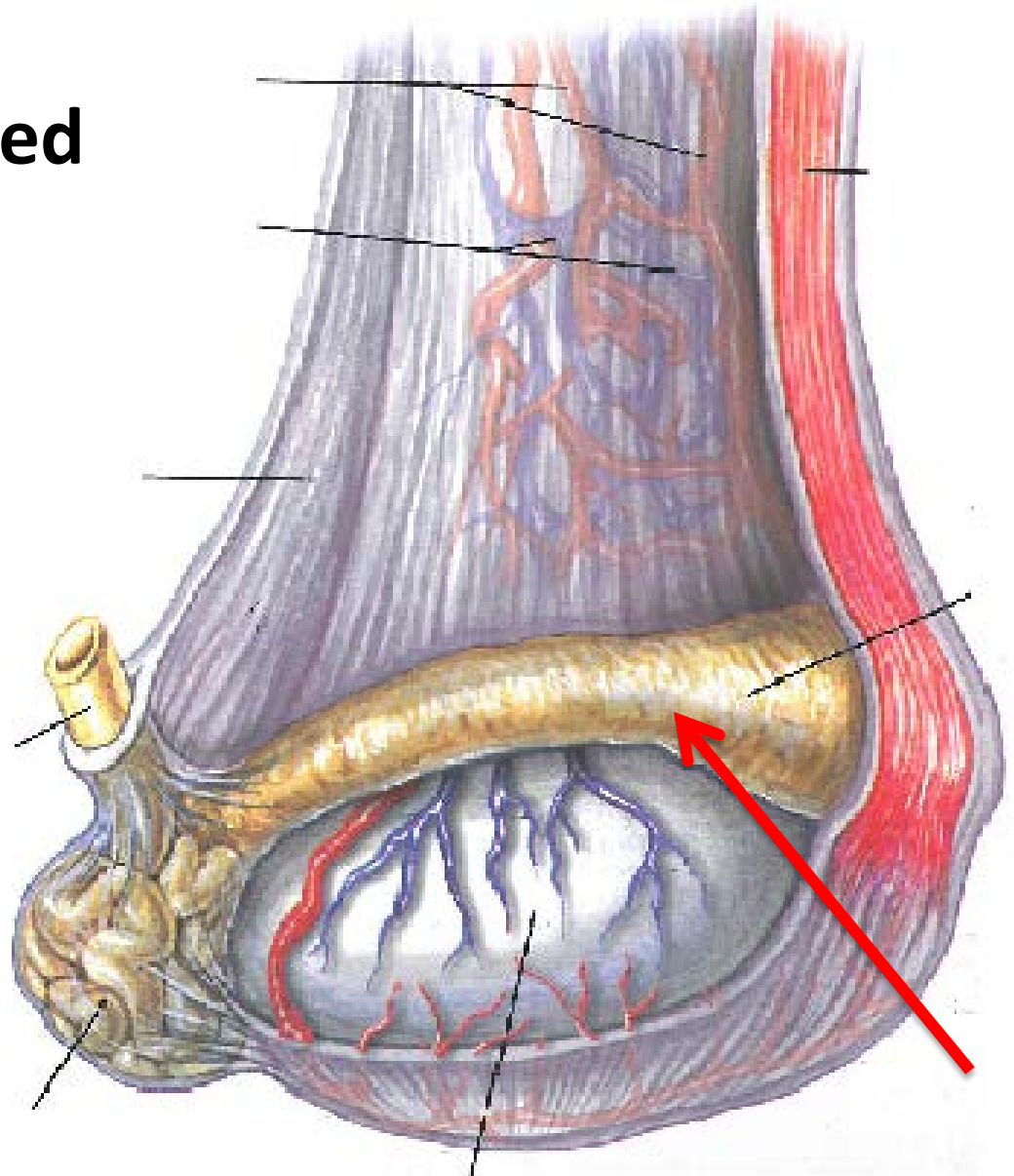
A-Epididymis

B-Testis

C-Tunica Albicans

D-Cremaster

E-Vas Deferens



8

Identify the following.

A- Pritchel

B- S File

C-Float

D-Extractor

E-Hoof Rasp



9

Identify this grass.

A- Lespedeza

B- Fescue

C- Bermuda Grass

D- Alfalfa

E- Timothy



10

What piece of equipment would these be used on?

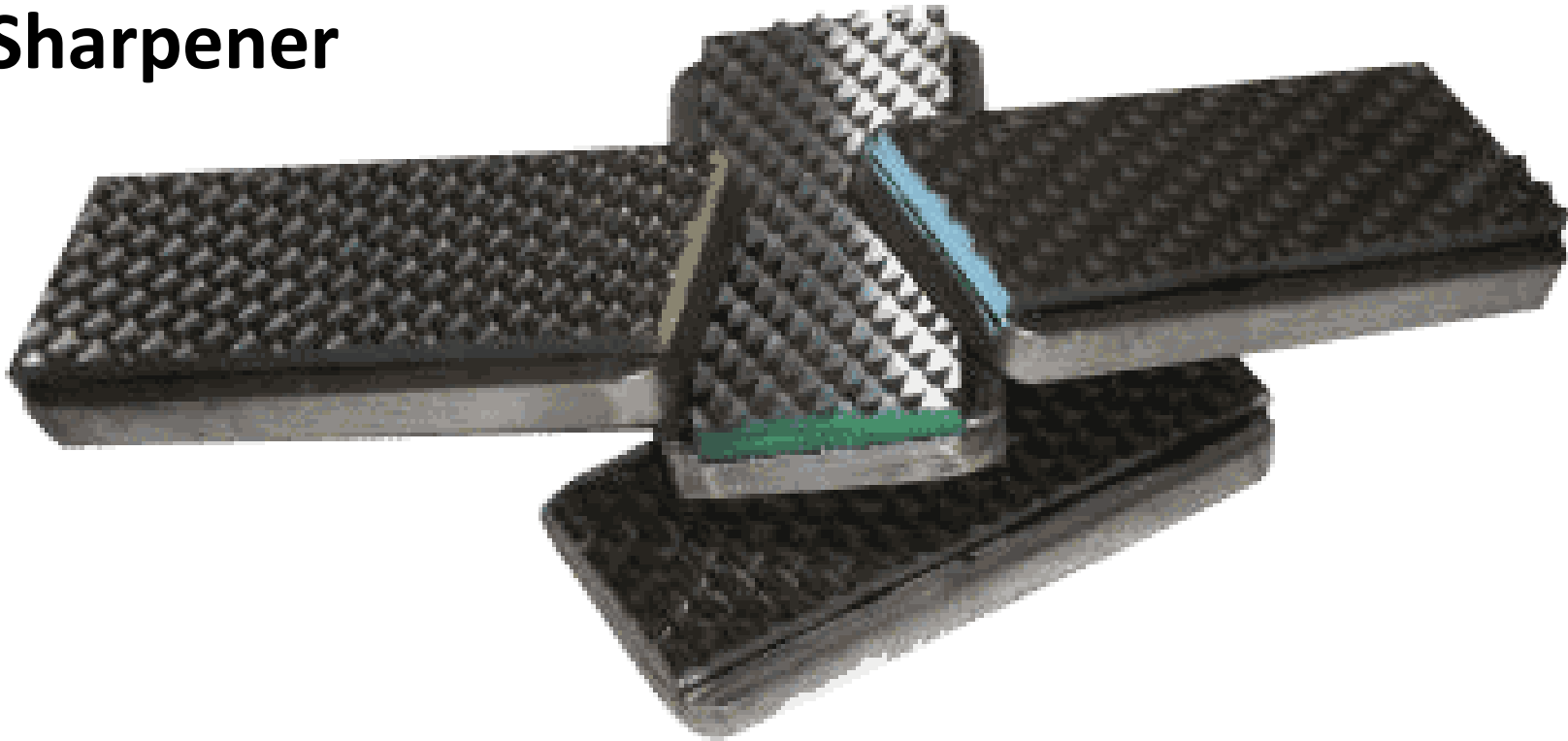
A- Rasp

B-Float

C-Stirrup Irons

D-Spur Sharpener

E-File



11

Identify this breed.

A- Suffolk

B- Andalusion

C- Holsteiner

D- Shire

E- Saddlebred



12 What is the scientific name for this internal parasite?

A- *Parascaris equorum*

B- *Gasterophilus intestinalis*

C- *Borborygmus*

D- *Oxyuris equi*

E- *Cyathostomum*



Hint- They are round in shape!

What is this piece of Equipment used for?

- A- Pulling off Shoes**
- B- Castrating**
- C- Pulling Teeth**
- D- Twitch**
- E- None of the Above**



14

Which bot fly species is shown?

- A- *Gasterophilus haemorrhoidalis***
- B- *Gasterophilus intestinalis***
- C- *Gasterophilus nasalis***
- D- A & B**
- E- None of the above**



15

Identify the breeching.

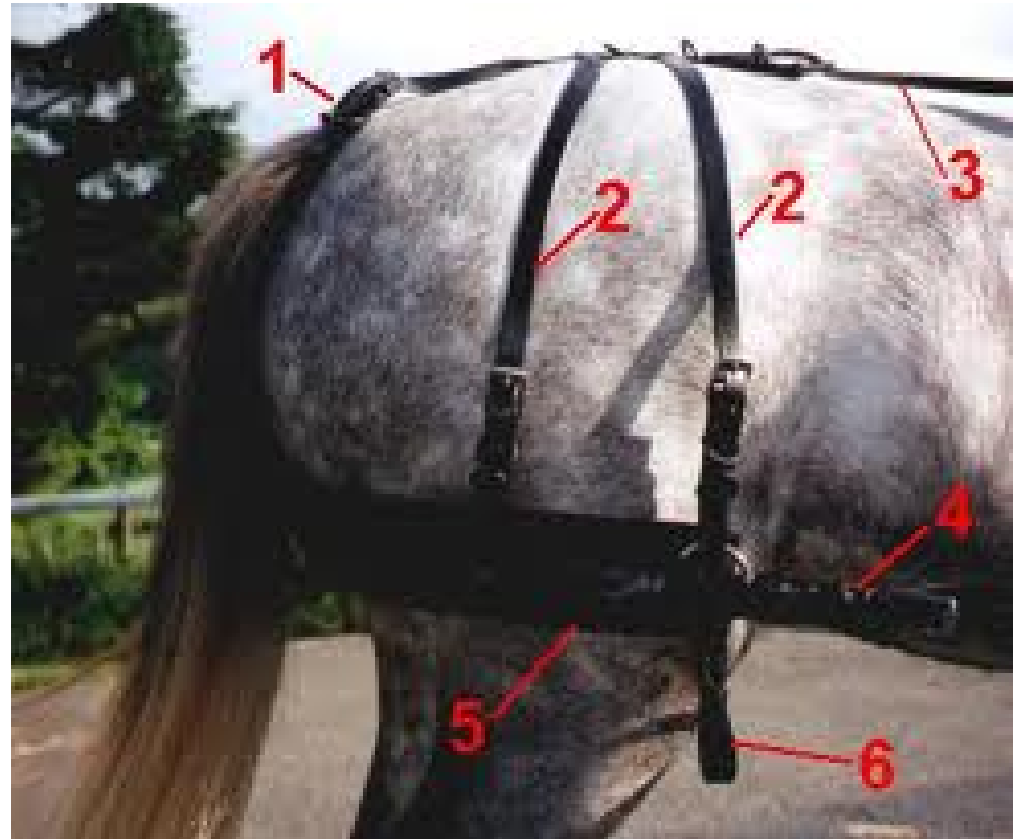
A- 1

B- 2

C- 3

D- 5

E- 6



16

What is this equipments purpose?

- A- Testing saddles**
- B- Gymnastic vault**
- C- Collecting semen**
- D- Teasing**
- E- None of the above**



17

What conformational fault is shown below?

A- Over at the Knee

B- Camped-Out

C- Ideal

D- Calf-Kneed

E- Pigeon-Toed



18

Identify this body part.

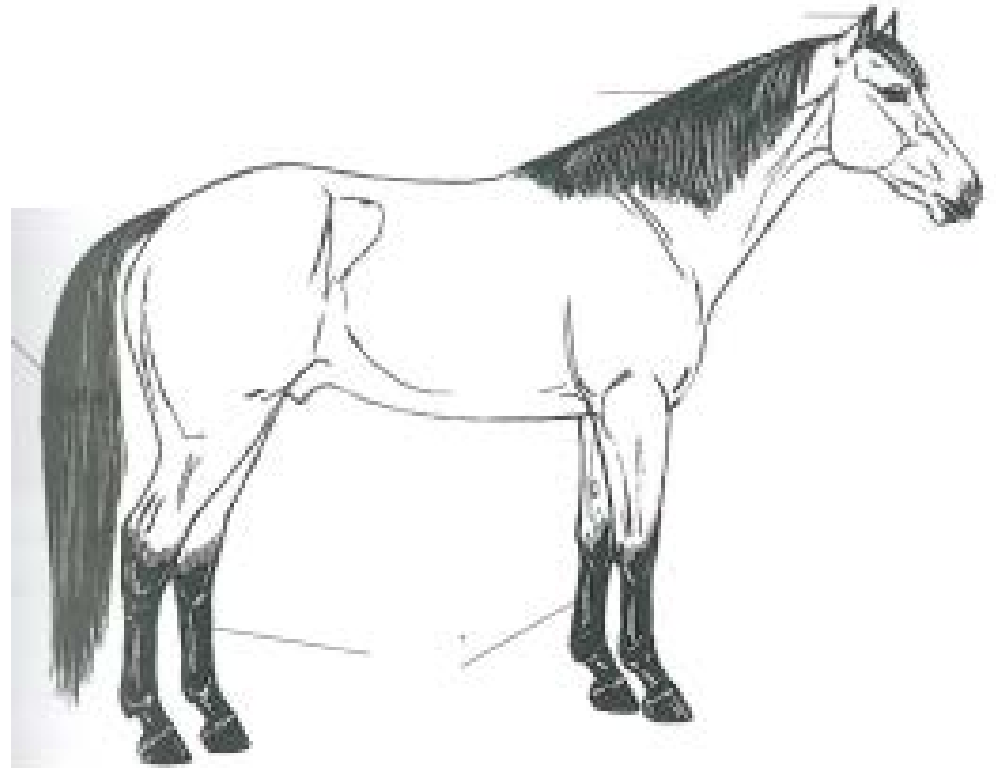
A- Hip

B- Stifle

C- Hock

D- Metatarsal

E- Phalanx



19

Identify this training device.

- A- Martingale**
- B- Chambon**
- C- War Bridle**
- D- Draw Reins**
- E- Daisy Reins**



20

Identify the equipment below.

- A- Chiffney Bit**
- B- Chambon**
- C- Shoe Support**
- D- War Bridle**
- E- Hackamore**



21

**Identify this piece of
horseshoeing
equipment.**

- A- Clinch Cutter**
- B- Nail Punch**
- C- Hammer**
- D- Shoe shaper**
- E- Nail Clamp**



22

Identify the following bridle part.

A- Curb Strap

B- Noseband

C- Reins

D- Bit

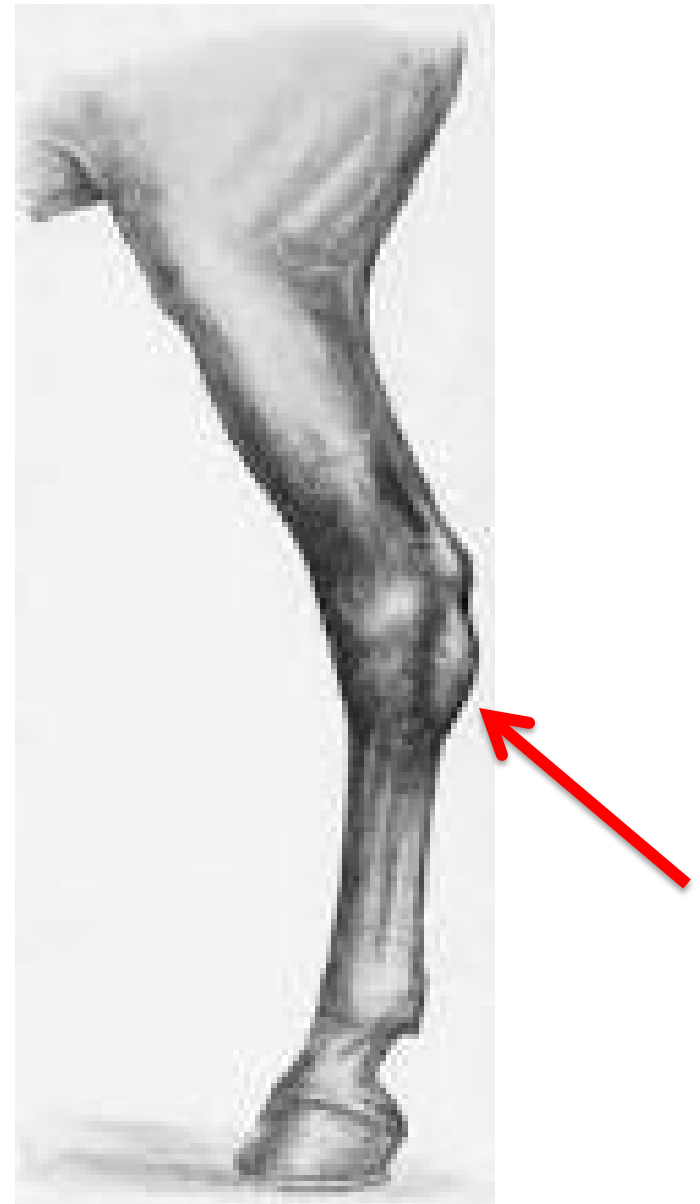
E- Flash Attachment



23

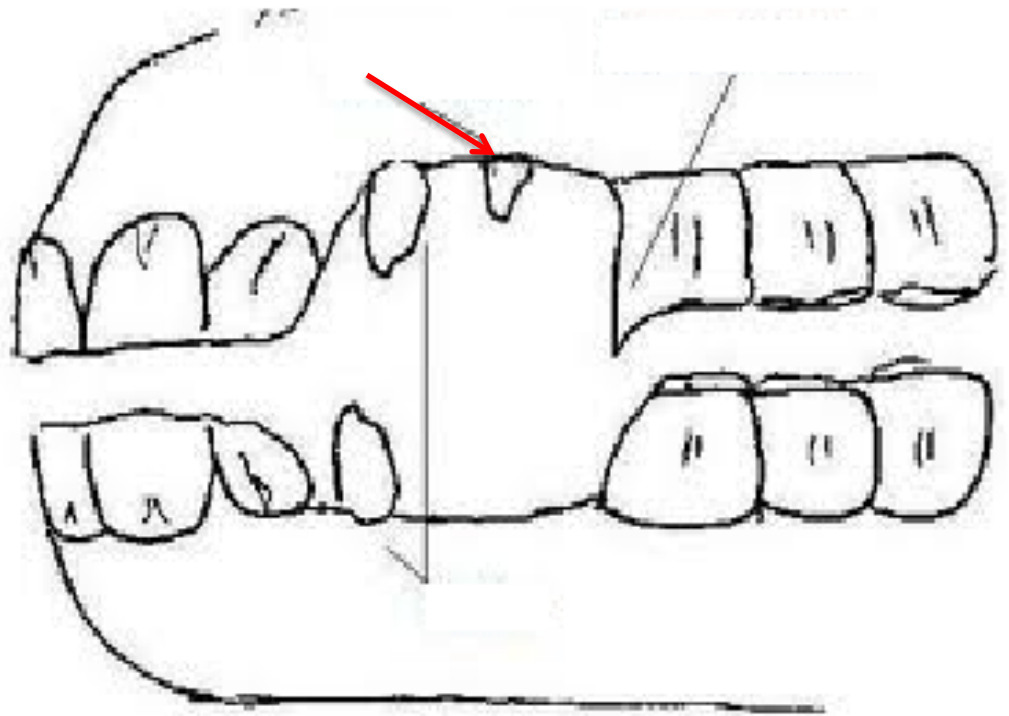
What blemish is shown?

- A- Curb**
- B- Sidebone**
- C- Capped Hock**
- D- Bone Spavin**
- E- Bog Spavin**



Identify this tooth.

- A- Wolf Tooth**
- B- Upper Incisor**
- C- Canine**
- D- Molar**
- E- Frontal Hook**



25

Identify this part of the digestive system.

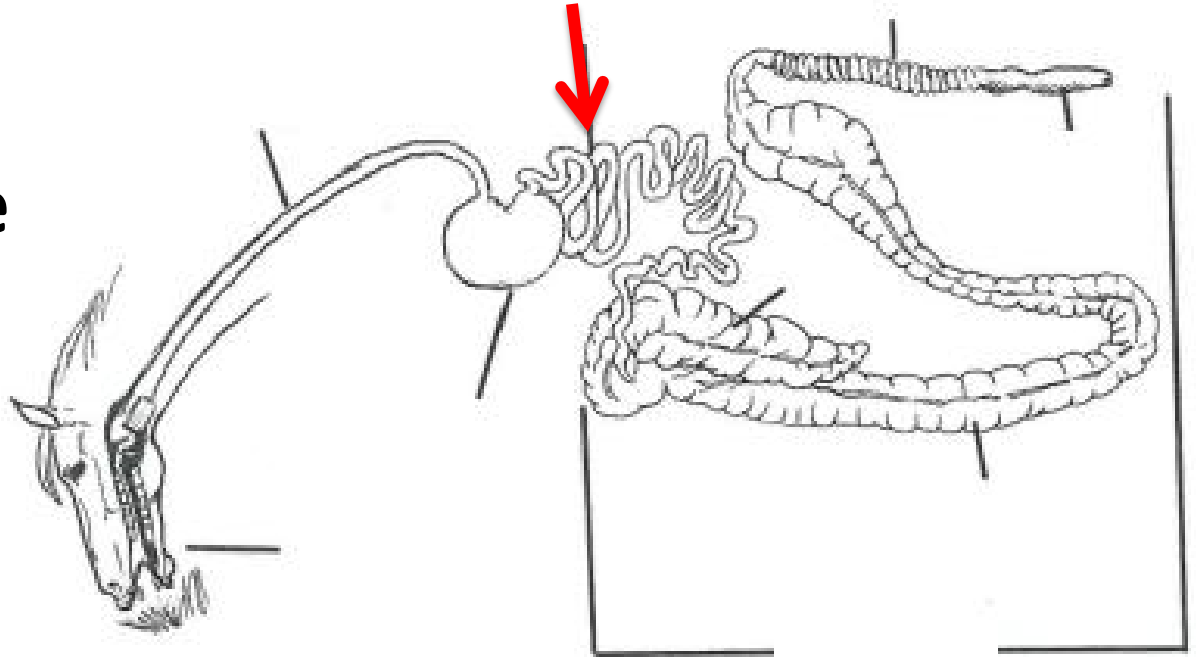
A- Large Colon

B- Small Intestine

C- Cecum

D- Stomach

E- Rectum



26

Classify this behavior.

- A- Allelomimetic
- B- Epimeletic
- C- Agnostic
- D- Investigative
- E- Sexual



27

Identify this behavior.

- A- Coprophagia**
- B- Geophagia**
- C- Chewing**
- D- Ingestive**
- E- Eliminative**



28

Classify this behavior.

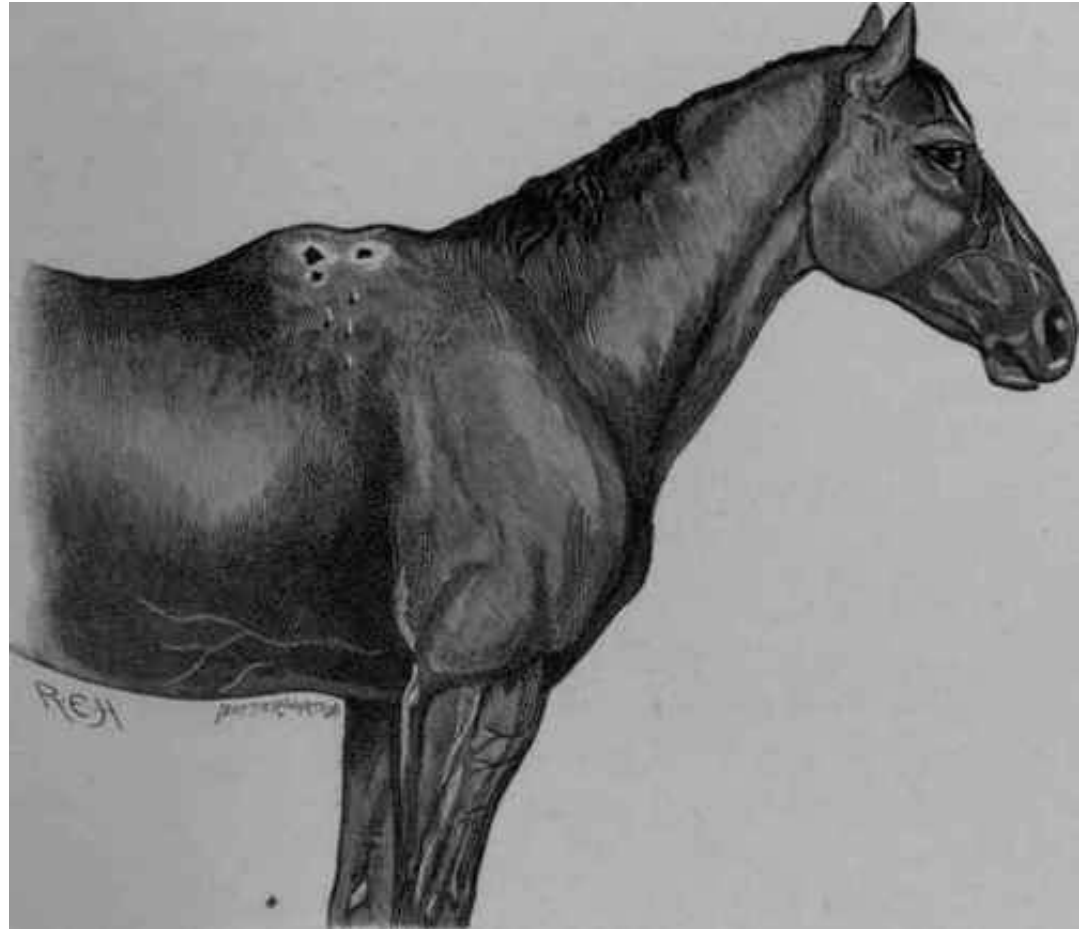
- A- Eliminative**
- B- Pecking Order**
- C- Allelomimetic**
- D- Contactual**
- E- Epimeletic**



29

Identify this condition.

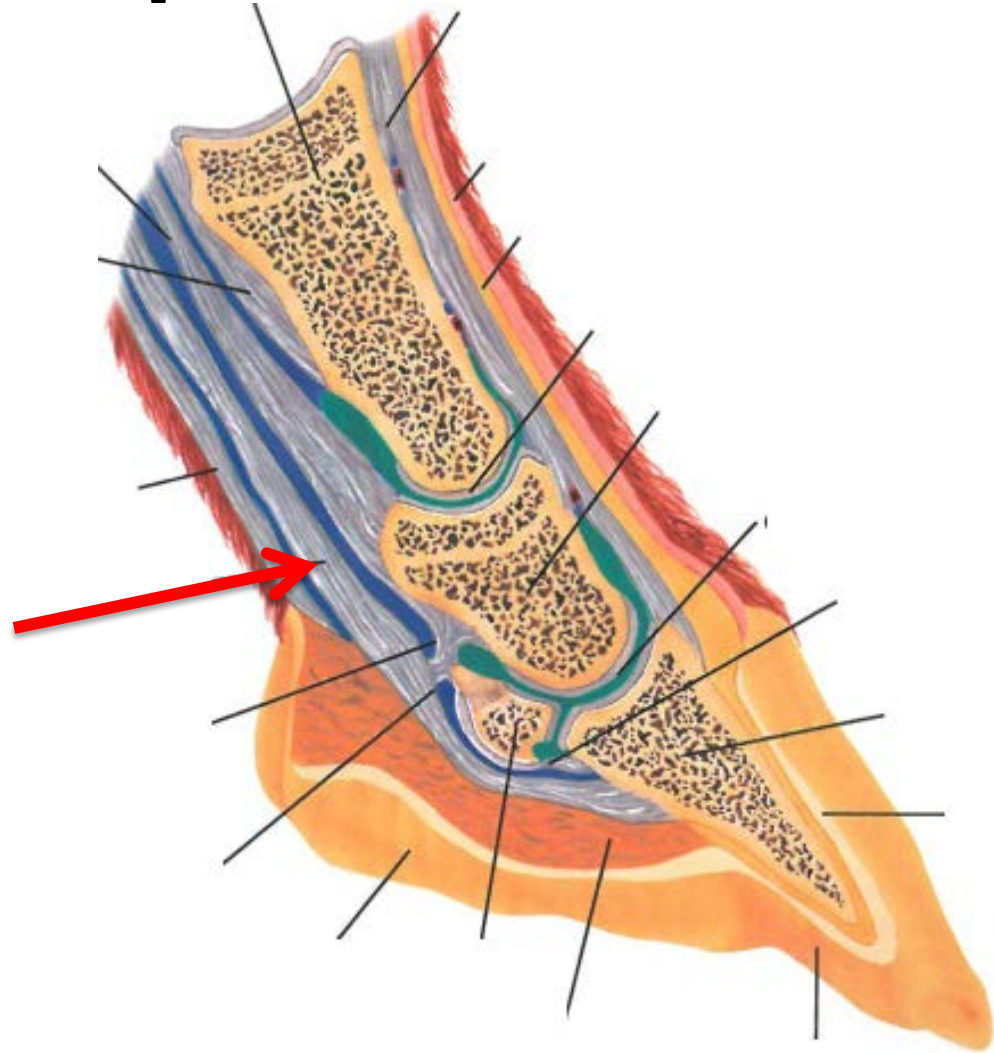
- A- Rain Rot**
- B- Heaves**
- C- Fistulous Withers**
- D- Poll Evil**
- E- HERDA**



30

Identify this part of foot.

- A- Superficial Digital Flexor Tendon**
- B- Middle Phalanx**
- C- Deep Digital Flexor Tendon**
- D- Navicular Bone**
- E- Suspensory Ligament**



31

Name this process.

- A- Banging**
- B- Branding**
- C- Forging**
- D- Aligning**
- E- None of the Above**



32

Identify this breed.

A- Tennessee Walking Horse

B- Frisian

C- Quarter Horse

D- Morgan

E- Missouri Fox Trotter



33

Name this training practice.

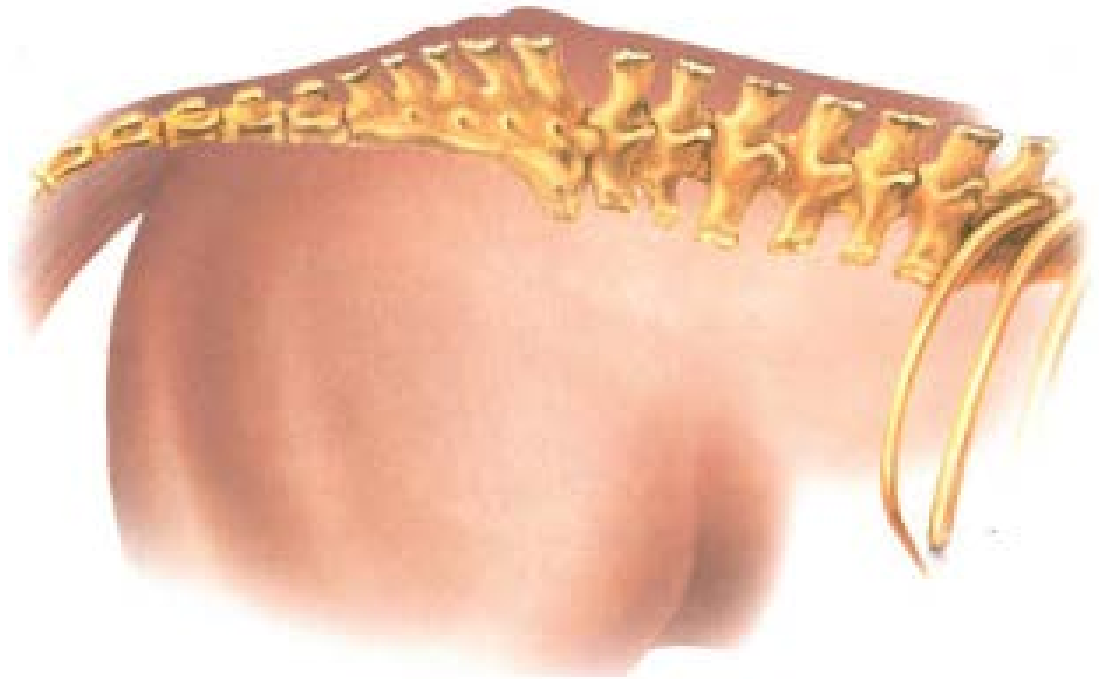
- A- Pleasure Driving**
- B- Showmanship**
- C- Ground Driving**
- D- Lunging**
- E- Roping**



34

Name this conformational defect.

- A- Lorodosis**
- B- Hunter's Bump**
- C- Fistulas Hip**
- D- Roach Back**
- E- Ideal Conformation**



35

Identify this veterinary practice.

- A- Navicular Test
- B- Stability Test
- C- Flexion Test
- D- Laminitis Test
- E- None of the Above



36

Identify this “air above the ground.”

- A- Levade
- B- Croupade
- C- Passage
- D- Capriole
- E- Piaffe



37

Identify this piece of equipment.

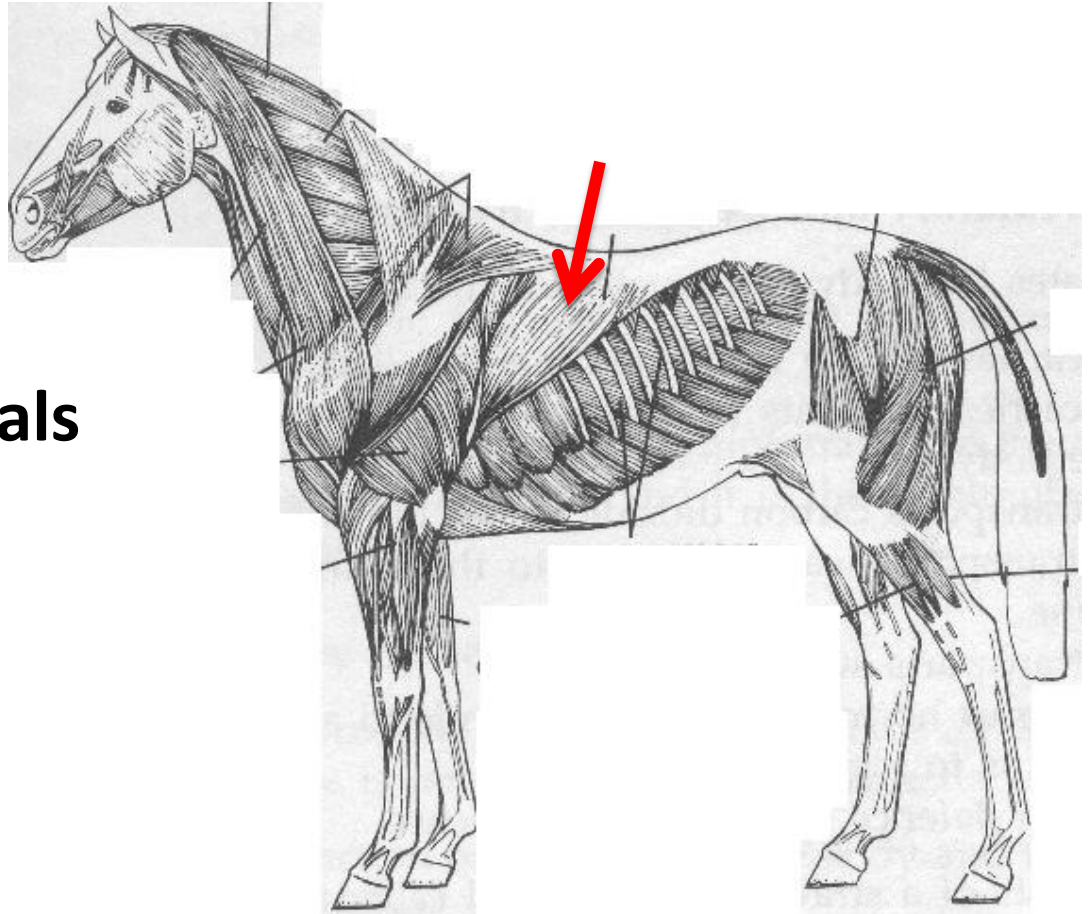
- A- Laredo**
- B- Knot**
- C- Mecate**
- D-Hanger**
- E- Rein**



38

Identify this muscle.

- A- Trapezius**
- B- Latissimus Dorsi**
- C- External Intercostals**
- D- Triceps**
- E- Masseter**



39

Identify this forage.

- A- Orchard Grass
- B- Kentucky Blue Grass
- C- Fescue
- D- Alfalfa
- E- Coastal Bermuda



40

Identify this color pattern.

- A- Overo
- B- Tobiano
- C- Skewbald
- D- Medicine Hat
- E-Leopard



41

Identify this color.

- A- Cremello**
- B- Perlino**
- C- Palomino**
- D- White**
- E- Grey**



42

Name this piece of roping equipment.

- A- Cow String**
- B- Horse String**
- C- Rope**
- D- Piggin' String**
- E- Laredo Rope**



43

Identify this dressage move.

- A- Levade**
- B- Capriole**
- C- Pirouette**
- D- Half Pass**
- E- Piaffe**



44

Identify the carotid artery.

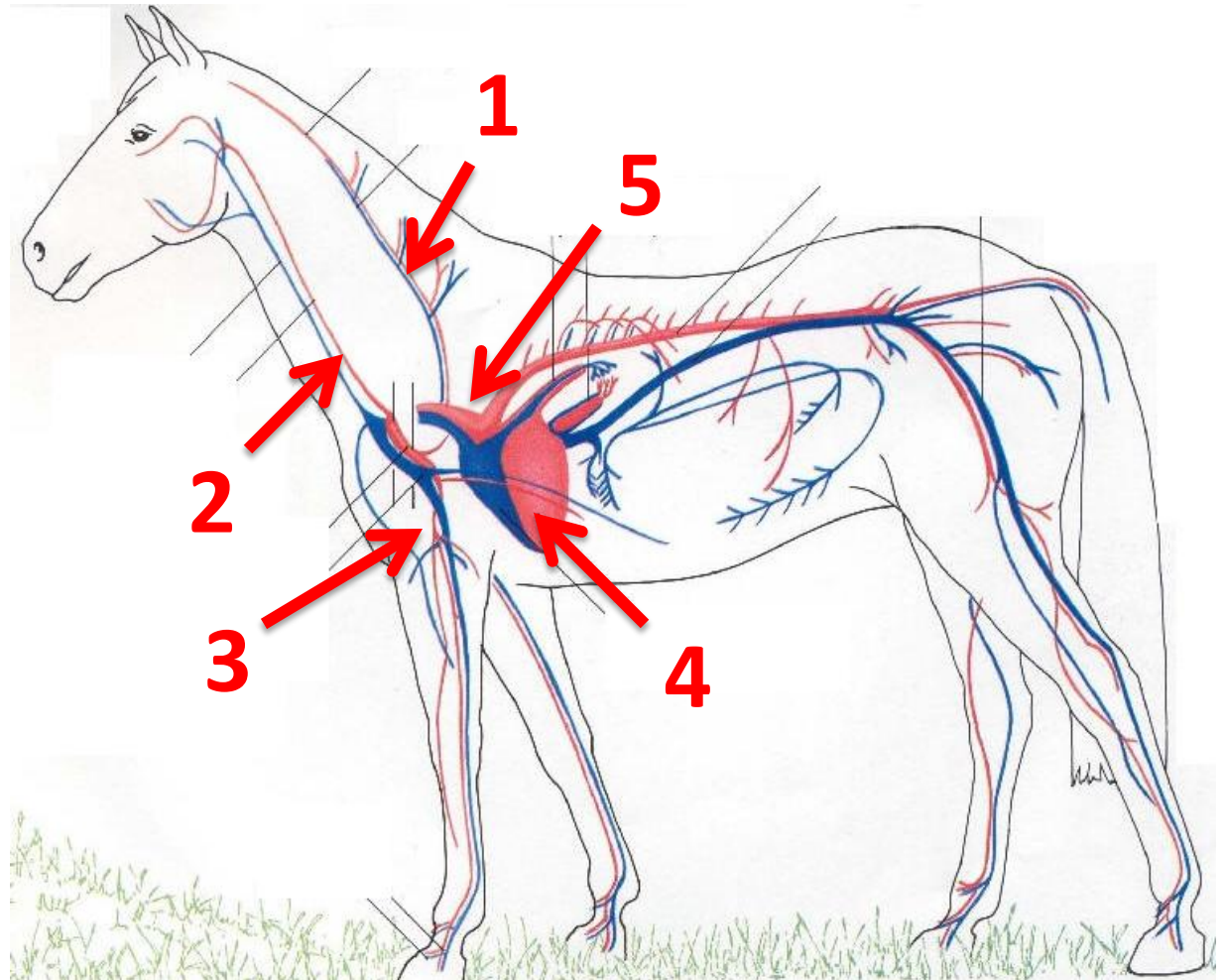
A- 1

B- 2

C- 3

D- 4

E- 5



45

**Identify this stage
of parturition.**

A- Stage 1

B- Stage 2

C- Stage 3

**D- Expulsion of the
placenta**

**E- None of the
above**



46

**Name this part
of the saddle.**

A- Fender

B- Stirrup

C- Cinch

D- Stirrup Hobble

E- Back Cinch



47

Identify this bit.

- A- Correction Bit**
- B- Weymouth Bit**
- C- Ported Snaffle**
- D- Pelham Bit**
- E- Kimberwick Bit**



48

Identify this vice.

- A- Wind Sucking**
- B- Weaving**
- C- Biting**
- D- Geophagia**
- E- Coprophagy**



49

Identify this disease.

A- Strangles

B- Epistaxis

C- HERDA

D- Cushings

E- None of the Above



50

Identify this disease.

- A- Aniridia**
- B- HYPP**
- C- HERDA**
- D- Scours**
- E- Ringworm**



End of Slides

Answer Key

- 1. E
- 2. A
- 3. C
- 4. B
- 5. C
- 6. A
- 7. B
- 8. C
- 9. B
- 10. D
- 11. B
- 12. A
- 13. B
- 14. B
- 15. D
- 16. C
- 17. D
- 18. B
- 19. B
- 20. A
- 21. A
- 22. A
- 23. A
- 24. A
- 25. B
- 26. B
- 27. A
- 28. C
- 29. C
- 30. C
- 31. C
- 32. B
- 33. C
- 34. B
- 35. C
- 36. A
- 37. C
- 38. B
- 39. D
- 40. A
- 41. B
- 42. D
- 43. C
- 44. B
- 45. B
- 46. D
- 47. B
- 48. A
- 49. A
- 50. C