

2006

NC State 4-H Hippology Contest

Senior Division Ids

Answers are in red.

1.

Identify this breed.

A. Arabian

B. Hackney

C. Morgan

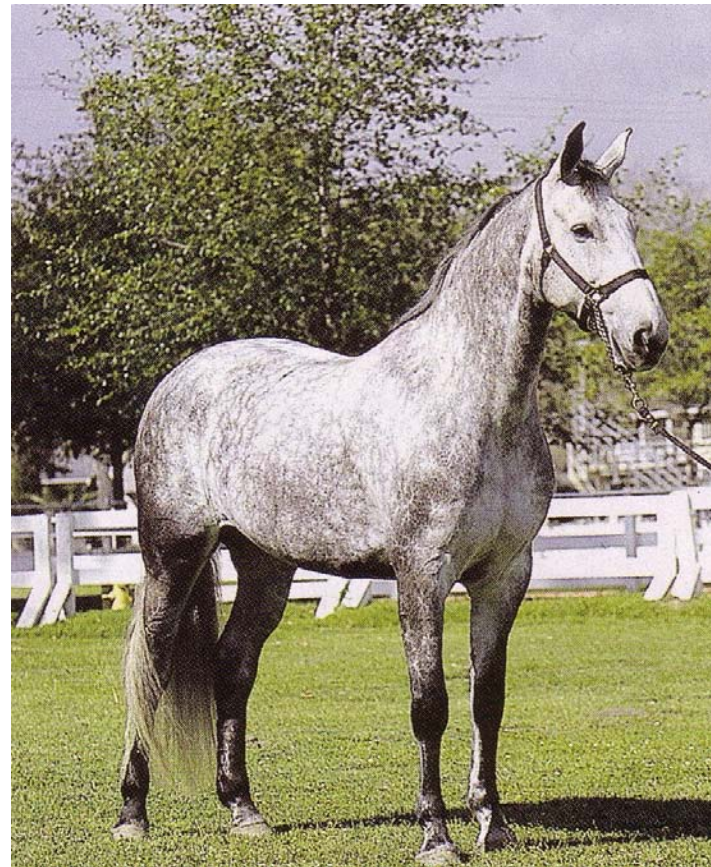
D. Saddlebred



2.

Identify the color of this horse.

- A. Blue roan
- B. Dappled grey
- C. Flea-bitten grey
- D. Grulla



3.

Identify this face marking.

A. Bald Face

B. Blaze

C. Star

D. Stripe



4.

What is the name for the item this horse is wearing on its head?

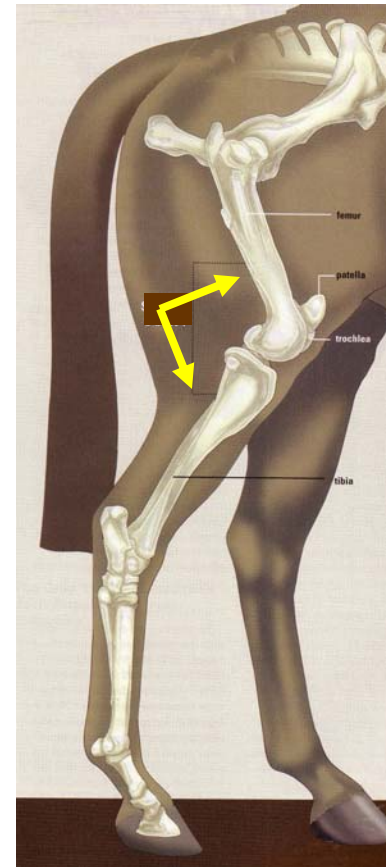


- A. Blinders
- B. Blinkers
- C. Face Mask
- D. Fly Mask

5.

The yellow arrows are pointing to a leg joint, which one?

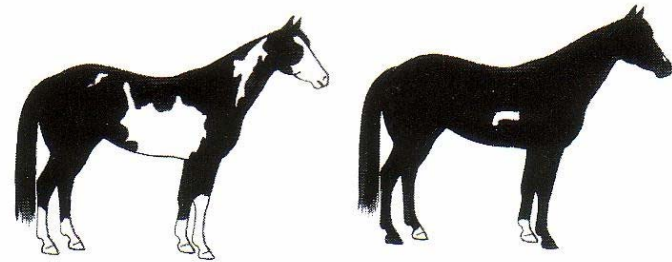
- A. Hip Joint
- B. Hock Joint
- C. Pelvis
- D. Stifle Joint



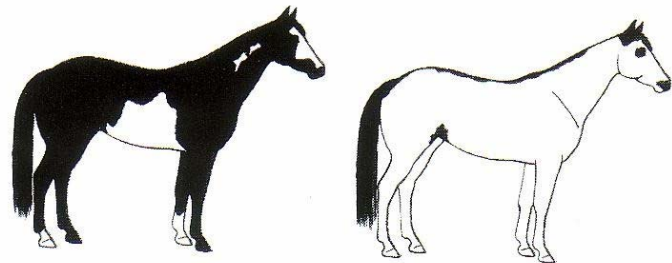
6.

Identify this coat pattern.

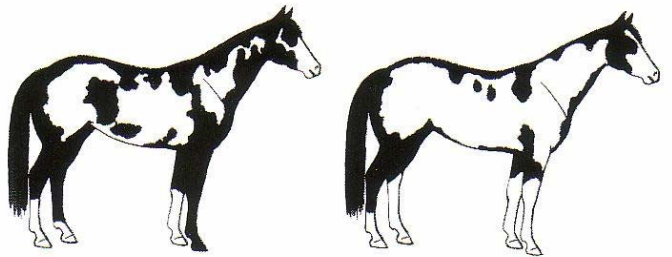
A. Overo



B. Pinto



C. Tobiano



D. Tovero

7.

Identify this roughage.



A. Alfalfa

B. Bermuda Grass

C. Fescue

D. Orchardgrass

8.

Identify this piece of hardware.

- A. Bridle Rack
- B. Clothes Rack
- C. Coat Rack
- D. None of the Above



9.

Identify this piece of tack.



A. Action Device

B. English Curb Chain

C. Rounders

D. Western Curb Chain

10.

Identify this high energy grain.



A. Barley

B. Milo

C. Oats

D. Rye

11.

From what disease condition is his horse suffering?

Swollen lymph glands that may burst

A. Equine Viral Arteritis

B. Equine Viral Rhinopneumonitis

C. Influenza

D. Strangles



Pus discharge from nostrils

12.

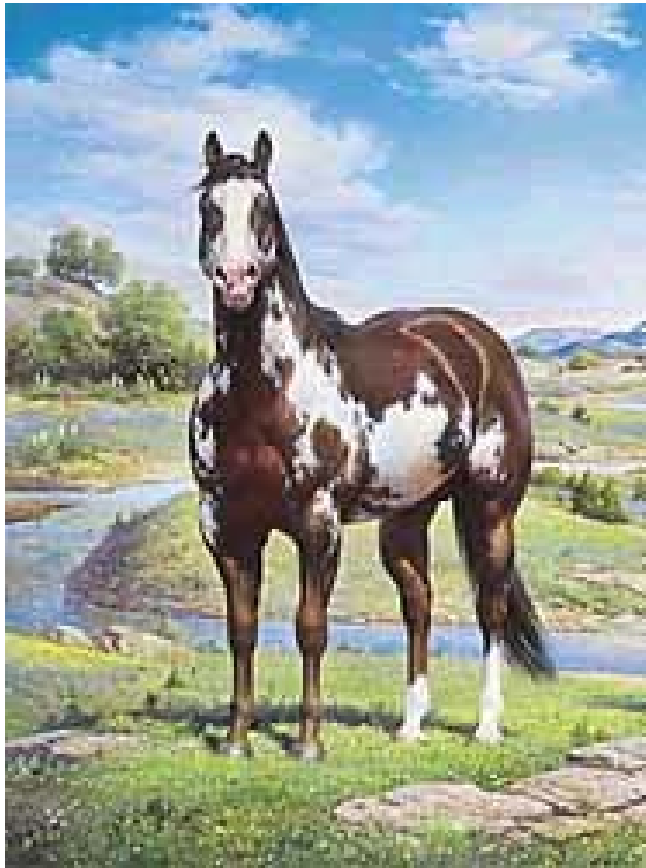
Identify this bit.

- A. Dr. Bristol
- B. Eggbutt Ring Snaffle
- C. Loose Ring Bradoon
- D. Pelham



13.

This paint coat pattern is typically a _____ genetic trait.



A. dominant

B. mutant

C. recessive

D. trisomy

14.

You are viewing the front feet of one horse.
Which foot is considered to be club footed?



“Foot 1”

“Foot 2”

- A. Both foot 1 and foot 2
- B. Foot 1
- C. Foot 2
- D. Neither foot 1 or foot 2

15.

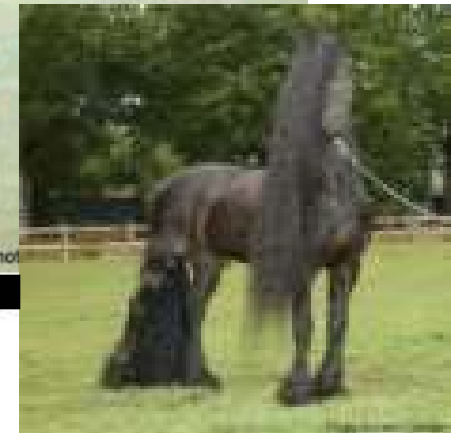
Identify this breed of horse.

A. Fresian

B. Morgan

C. Paso Fino

D. Percheron



16.

The yellow arrow is pointing to a piece of tack, what is its name?



- A. Cavesson
- B. Dropped Noseband
- C. Figure 8 Noseband
- D. Flash Noseband

17.

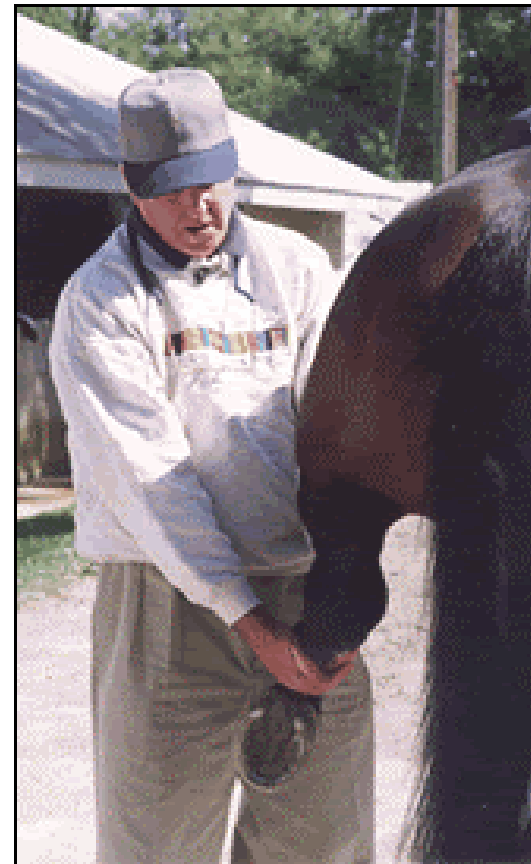
What type of test is being performed on this horse?

A. Flexion

B. Joint

C. Palpation

D. Rectal Palpation



18.

What is the color of this horse?

- A. Albino
- B. Cremello
- C. Perlino
- D. Red Roan



19.

Due to poor vulval conformation, what procedure would be performed to prevent wind sucking and urine pooling?



- A. Breeding Soundness Exam
- B. Caslick's Operation
- C. Episiotomy
- D. Rectal Palpation

20.

Identify this roughage.



A. Alfalfa

B. Bermuda Grass

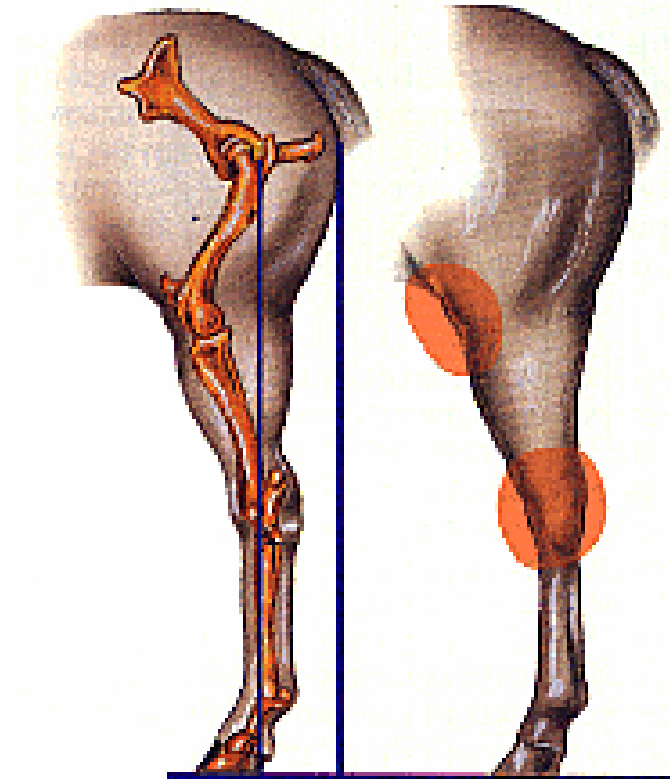
C. Fescue

D. Straw

21.

Identify this conformational variation.

- A. Bow Legged
- B. Camped Out
- C. Post Legged
- D. Sickie Hocked



22.

Identify this maneuver.



A. Back

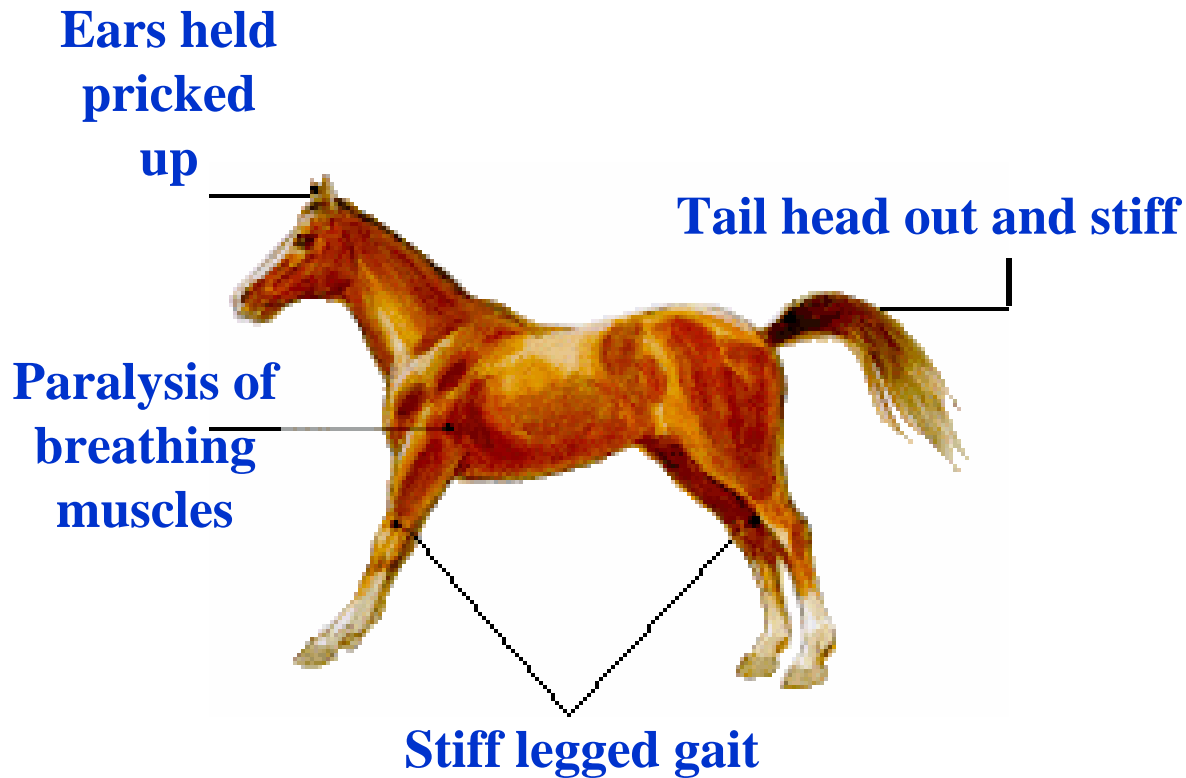
B. Rollback

C. Sliding Stop

D. Spin

23.

From what disease condition is his horse suffering?



A. EIA

B. Equine Encephalomyelitis

C. Rabies

D. Tetanus

24.

Identify the color of this horse.

- A. Brown
- B. Chestnut
- C. Liver Chestnut
- D. Sorrel



25.

What behavior is this horse exhibiting?



A. Agonistic

B. Epimeletic

C. Ingestive

D. Reactive

26.

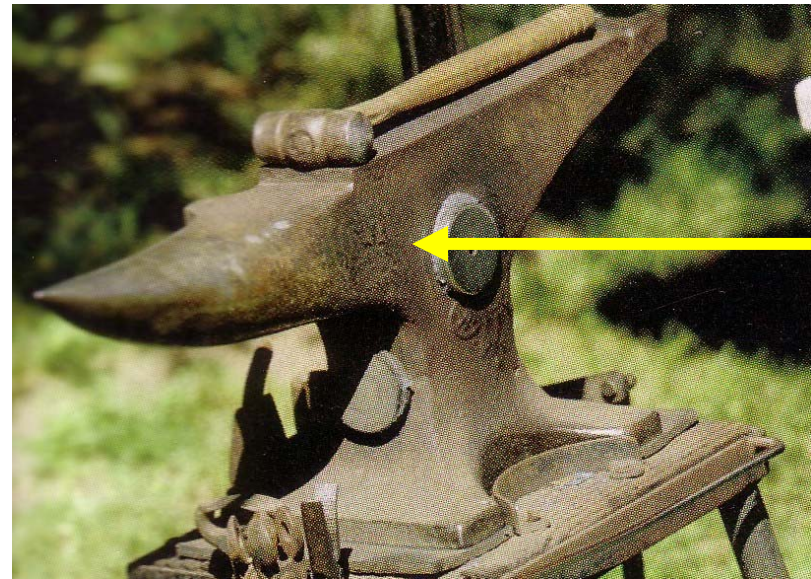
Name the tool to which the yellow arrow is pointing.

A. Anvil

B. Boxleg Vise

C. Forge

D. Shoe Shaper



27.

What type of artificial vagina is pictured?



A. Colorado AV

B. Fujihira AV

C. Japanese AV

D. Missouri AV

28.

What is the Body Condition Score of this horse?

A. BCS 1

B. BCS 3

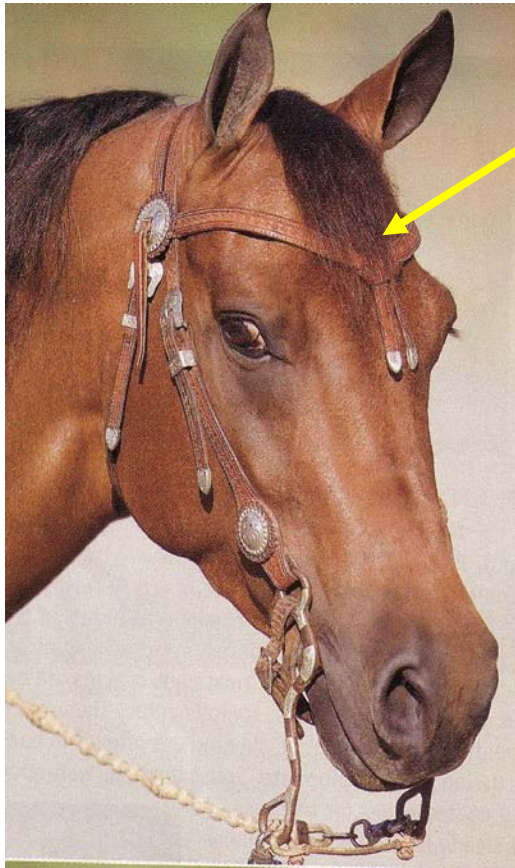
C. BCS 5

D. BCS 9



29.

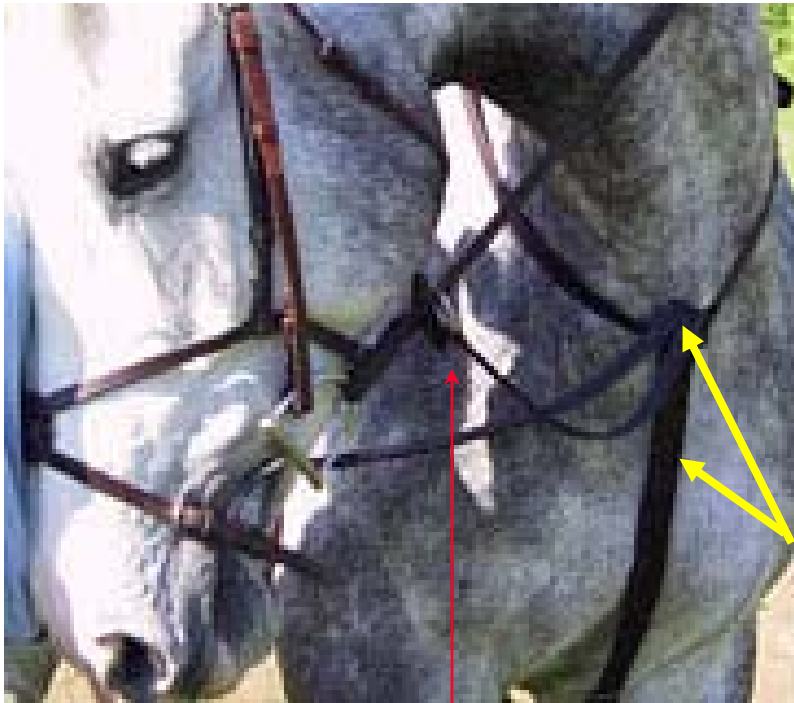
Identify the part of the bridle where the arrow is pointing.



- A. Browband
- B. Cheek Piece
- C. Split Ear
- D. Throatlatch

30.

The yellow arrows are pointing to a piece of tack, what is its name?



A. Breast Plate

B. Reins

C. Running Martingale

D. Standing Martingale

Yes, that is a ring!

31.

Identify this roughage.

- A. Alfalfa
- B. Bermuda Grass
- C. Orchardgrass
- D. Straw



32.

What color is pictured, and doesn't typically have a dorsal stripe?

A. Bay

B. Buckskin

C. Dun

D. Palomino



33.

Identify this style of bridle.



- A. Curb Bridle
- B. Hackamore
- C. Rommel Bridle
- D. Split Ear/One Ear

34.

Identify this high energy grain.

- A. Corn
- B. Oats
- C. Pellets
- D. Wheat



35.

The yellow arrow is pointing to a piece of tack, what is its name?



- A. Cheek Snaffle
- B. Dee Ring Snaffle
- C. Gag Snaffle
- D. Kimberwick

36.

Identify this breed of horse.



A. Andalusian

B. Bashkir Curly

C. Mustang

D. Shetland Pony

37.

Identify this high energy grain.

A. Barley

B. Corn

C. Milo

D. Oats



38.

What does a horse have on its legs that this breed of ass does not.



A. Blemishes

B. Chestnuts

C. Feathers

D. Vents

39.

Identify the color of this horse.



A. Bay

B. Buckskin

C. Dun

D. Grulla

40.

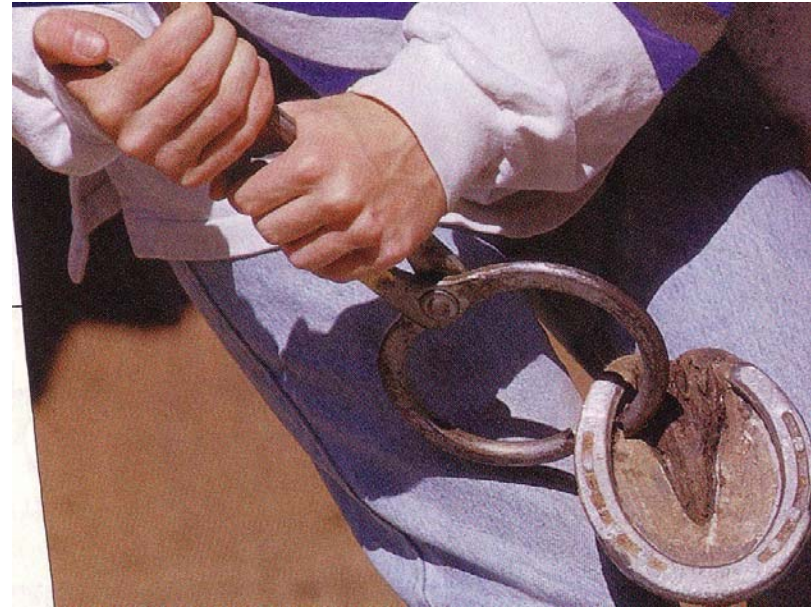
Identify tool being used by this person.

A. Clinch cutters

B. Hoof testers

C. Nippers

D. Pull offs



41.

When loping in a clockwise direction, this horse would be on the _____.



- A. Correct diagonal
- B. Correct lead
- C. Incorrect diagonal
- D. Incorrect lead

42.

Identify this breed of horse.



A. Fresian

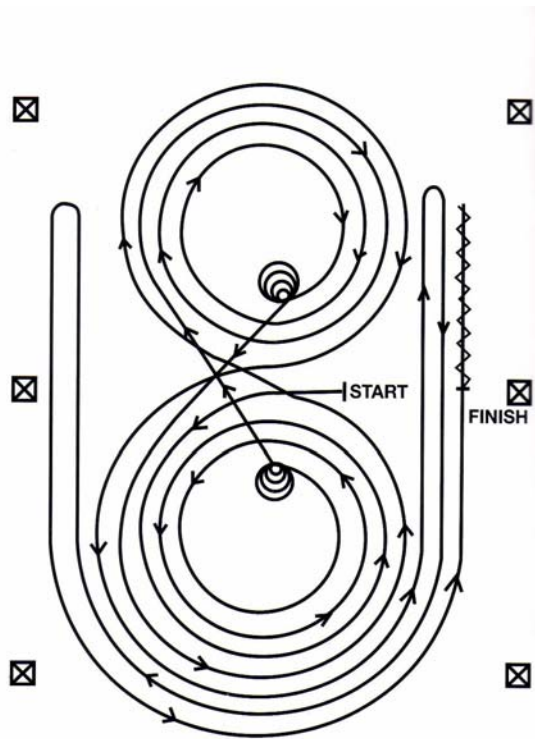
B. Lippizzaner

C. Paso Fino

D. Spanish-Barb

43.

Identify this pattern type.



A. Equitation

B. Horsemanship

C. Reining

D. Western Riding

44.

This condition characterized by itching and ring-shaped, discolored patches covered with scales is caused by a(n) _____.

- A. Allergic reaction
- B. Fungus**
- C. Injury
- D. Worm



45.

What type of riding attire is this rider wearing?



A. Clothes

B. Satins

C. Silks

D. Uniform

46.

Identify this conformation fault.

A. Mutton withered

B. Roach backed

C. Rocked backed

D. Swaybacked



47.

This method is used to determine what about mare? If she is . . .



A. in anestrus

B. in diestrus

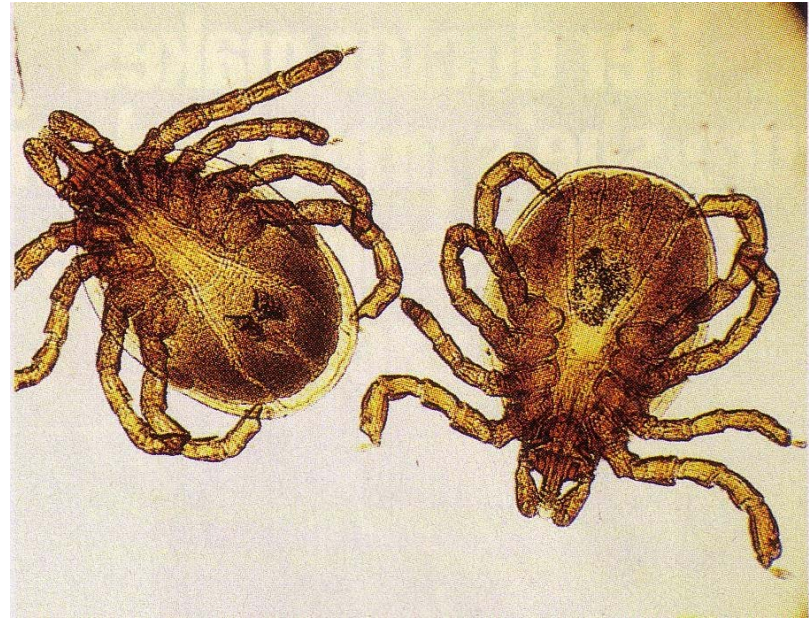
C. in estrus

D. pregnant

48.

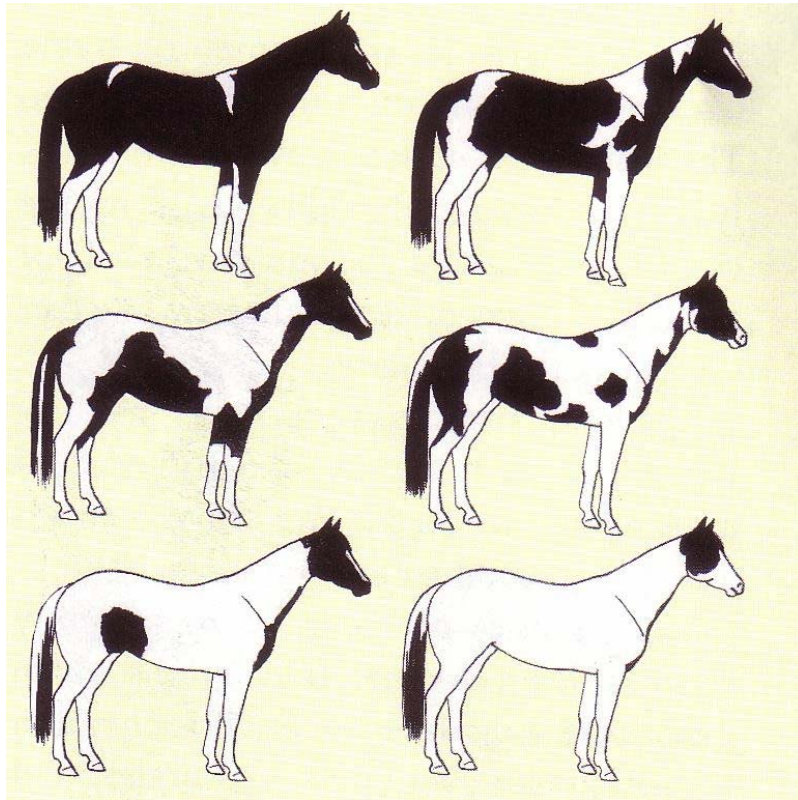
These insects are responsible for what disease characterized by swollen joints, fever, and lethargy?

- A. EIA
- B. Equine Encephalomyelitis
- C. Lyme Disease
- D. Strangles



49.

Identify this coat pattern.



A. Overo

B. Tobiano

C. Tovero

D. Paint

50.

Identify this horse and rider event.



- A. Equitation Pattern
- B. Horsemanship Pattern
- C. Jump Course
- D. Obstacle Course/Trail Pattern

The End!

- You have now completed the Senior Id portion of the Hippology Contest.
- Now, please complete the Senior Test I and II
- Please raise your hand if you have any questions.
- Use the coversheet provided to keep your answers covered.